

Topics covered in the presentation on Chaplaincy by Major Robert Garven.

Major Garven was The Salvation Army full-time Chaplain to NSW Fire Brigade. He was part of the Brigade's debriefing team and was called all over NSW to work with psychologists and peer support team members in debriefing and supporting personnel after crises.

Chaplain (cháplin)

1. A clergyman attached to a chapel.
2. A clergyman attached to a hospital, prison, university or other institutions.
3. A clergyman attached to a military unit or on board a ship.
4. [Middle English *chapeleyn*, from Old French *Chapele*, from Medieval Latin *capellānus*, from Latin *cappa*, a cloak.

Came into use after the cloak, or *cappa*, of St Martin (316-397), much loved Bishop of Tours, was kept in a movable shrine called a *cappella*, hence a sanctuary that is not called a church. His cloak was a symbol of heroic charity. Afterwards, the chapel became either an alcove or chamber within a church, a separate building, or a room set apart for the purpose of worship in a secular building. The Chaplain was the priest given the task of minding the cloak in the Chapel.

Cloak Minders

- Military
- Hospitals
- Police
- Fire Services
- Ambulance
- SES
- Volunteer Rescue (Sea and Land)
- Schools
- Industrial/Workplace
- Clubs etc

Chaplaincy in the NSW Fire Brigades

1. Pastoral Care to Members and their Families
2. Active in Critical Incident Stress Management
3. Respond to emergencies as part of Brigades Response, including Brigades assistance to Members of the Public.

PASTORAL CARE TOPICS

Theology of Pastoral Care

Theodicy – “A vindication of divine justice in the face of the paradox that God is both omnipotent (all powerful) and benevolent (all loving), and yet permits evil to exist among men.”

Who do you pastor – boundary issues

Counsellor –

- Salvation – is salvation the answer to all of life's problems?
- Counselling Models
- Referral Skills
- Listening Skills
- Helping Relationship
- Hospital Visitation – Etiquette

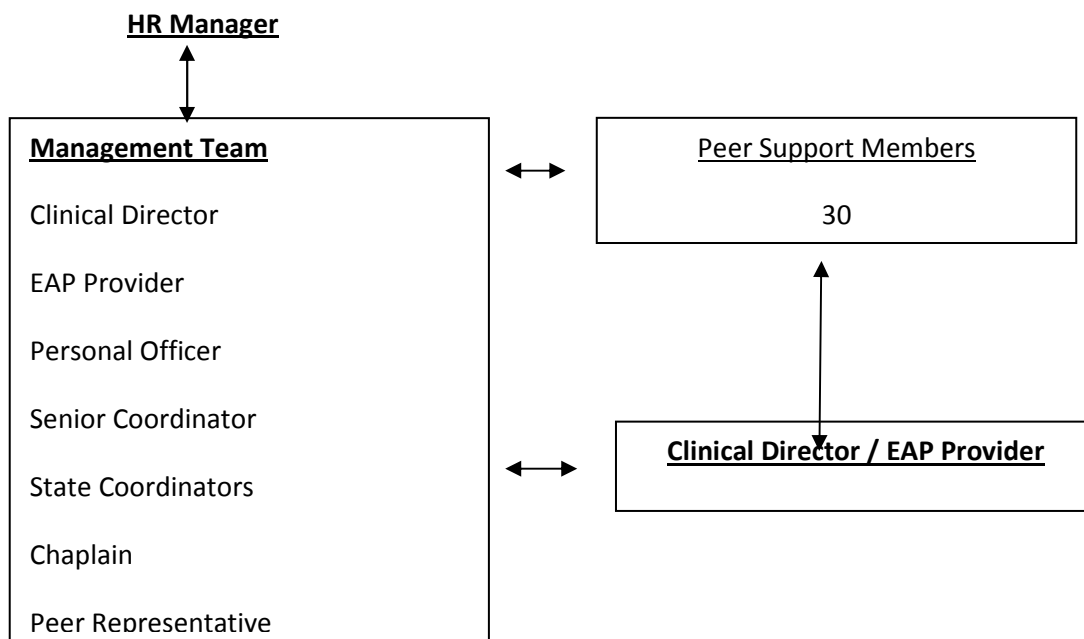
- Mental Health Issues
- Grief, Bereavement and Suicide
- Relationship Issues
- D & A Issues

ELEMENTS OF CISM

(Everly & Mitchell, 1999)

- Pre-incident education, preparation
- Demobilisations (large groups)
- Crisis Management briefings (large groups primary, secondary or tertiary victims)
- Defusings (small groups)
- Critical Incident Stress Debriefings (CISD, small groups)
- One-on-one interventions
- Family CISM
- Organisational intervention/consultation
- Pastoral Crisis Intervention
- Follow-up and referral

CISM TEAM



EMERGENCY RESPONSE

Early intervention / Pastoral Crisis Intervention Strategies

Emergency Services Protocols

Protective Clothing / Uniform

Workcover and Insurance Issues

Availability (24 hour on-call?)

Access to Other Agencies (Food, Clothing, Shelter)

SELF CARE

Clinical Supervision

Time Out

Family

Hobbies

Sport

Normal Activities with people who are not needing your ministry

Happy are those whose greatest desire is to do what God requires; God will satisfy them fully.

Matthew 5:6 GNB